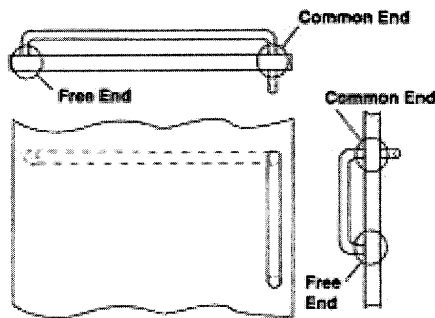
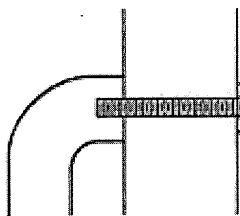




DON-JO MFG., INC.

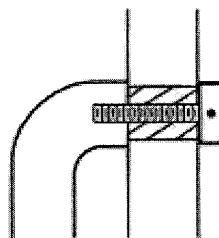


1 MOUNTING - THRU BOLT (WOOD OR METAL DOORS)



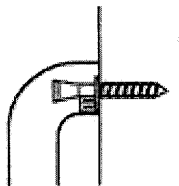
All pulls: 1/4-20 w/Finish Washer
Offset Pulls: 3/8-24 (Finish washer not supplied.)

4 MOUNTING - THRU BOLT (GLASS DOORS)



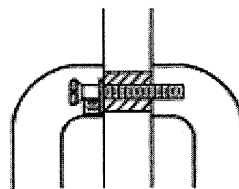
3/8-24 decorative thru bolt
w/neoprene washers
5/8" Plexiglass bushing

2 MOUNTING - SURFACE CONCEALED (WOOD DOORS)



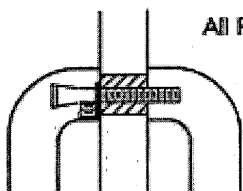
1/4" x 1" w/set screw

5 MOUNTING - BACK TO BACK (GLASS DOORS)



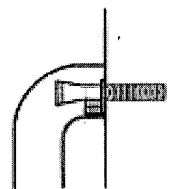
3/8-24 Bolt w/set screw
5/8" Plexiglass bushing
w/Neoprene washers

3 MOUNTING - BACK TO BACK (WOOD OR METAL DOORS)

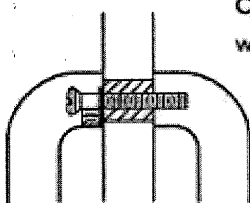


All Pulls: 1/4-20 w/set screw

6 MOUNTING - SURFACE CONCEALED (METAL DOORS)

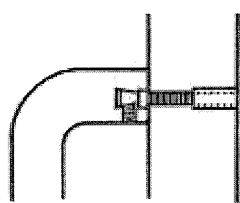


1/4-20 w/set screw



Offset Pulls: 3/8-24
w/set screw

7 MOUNTING - CONCEALED (WOOD OR METAL DOORS)



1/4-20 w/set screw
Concealed studs welded to
back of Push Plate
*Must mount studs to 1/8"
thick plates only! Thinner
gauge cannot be used!