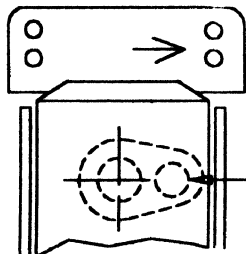
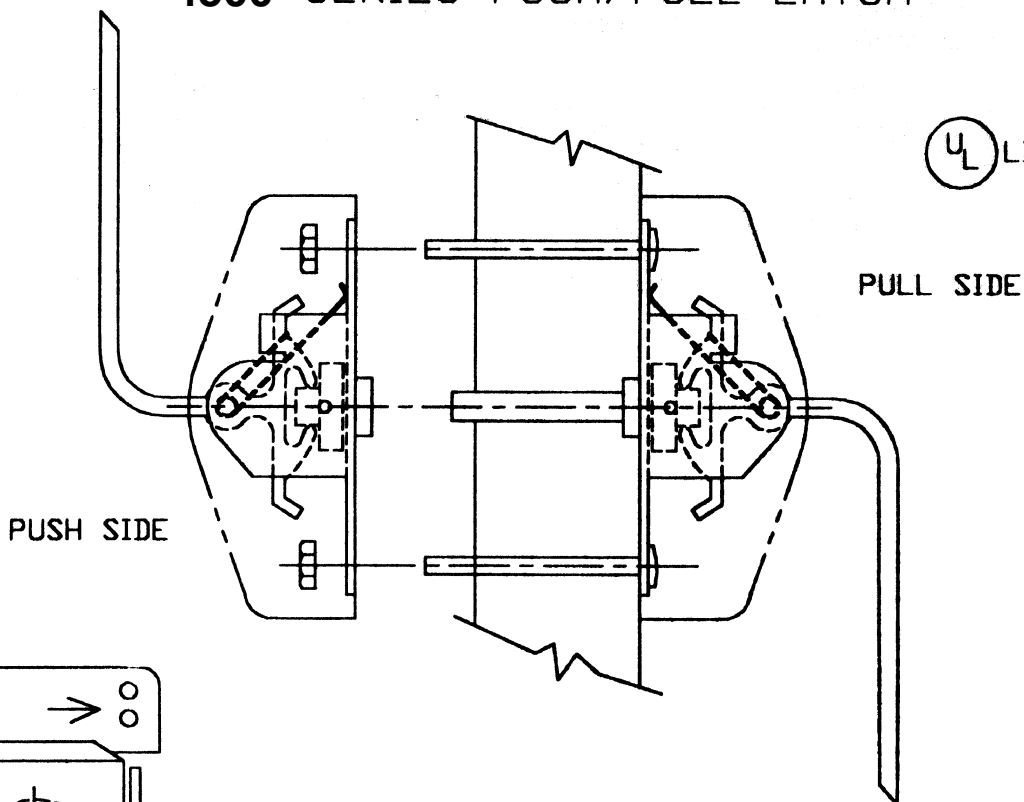
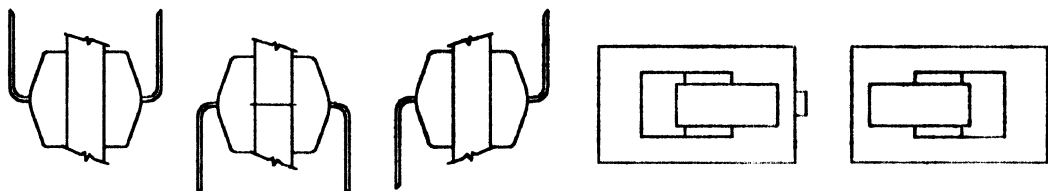


4500 SERIES PUSH/PULL LATCH



NOTE:

BEFORE MOUNTING PUSH AND PULL HANDLES,
CAM PIN MUST BE ROTATED TOWARD SIDE INDICATED
BY ARROW STAMPED ON BASE



ALL UNITS ARE SUPPLIED WITH LATCH SHAFT PRESS FIT
INTO PULL SIDE ASSEMBLY
VISION LITE MUST BE AT LEAST 6' FROM LATCH PREP

SCREW DETAIL

	WOOD DOOR	METAL DOOR
PUSH/PULL HANDLE	(4) 10-32 X 2-3/4" PAN HD. M.S. (4) 10/32 NUT	(4) 10-32 X 2-3/4" PAN HD. M.S. (4) 10/32 NUT
COVER	(4) 8-32 X 3/8" F.H.M.S.	(4) 8-32 X 3/8" F.H.M.S.
LATCH	(2) #6 X 3/4" F.H.W.S.	(2) 6-32 X 3/8" F.H.M.S.
STD STRIKE	(2) #8 X 3/4" F.H.W.S.	
ASA STRIKE		(2) 8-32 X 3/8" F.H.M.S.

DON-JO MFG., INC.

P.O. Box 929
Sterling, Ma. 01564
www.don-jo.com

4500
Rev. 9-22-00